

Ultrasonic Cleaning Generator  
PCB type with Multi - Feature

**Technical Specifications**

Bosan Industrial Technology Ltd.  
Flat 7, 5/F., Kai Fuk Industrial centre,  
1 Wang Tung Street, Kowloon Bay, Kowloon, Hong Kong.  
Tel : (0852)-2755-3470 Fax : (0852)-2757-2111  
Website : [www.bosan-control.com](http://www.bosan-control.com)  
E-mail : [info@bosan-control.com](mailto:info@bosan-control.com)

## PCB Type Ultrasonic Cleaning Generator ( Multi-feature )

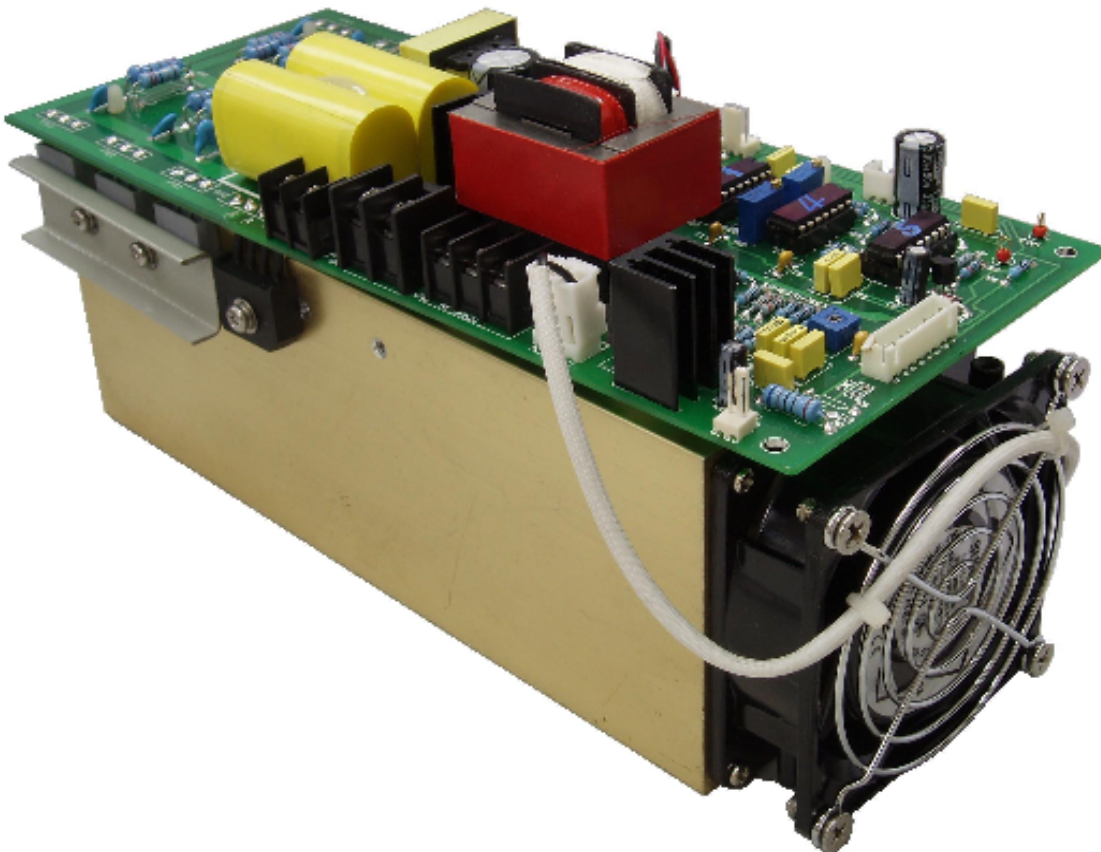
### Specifications

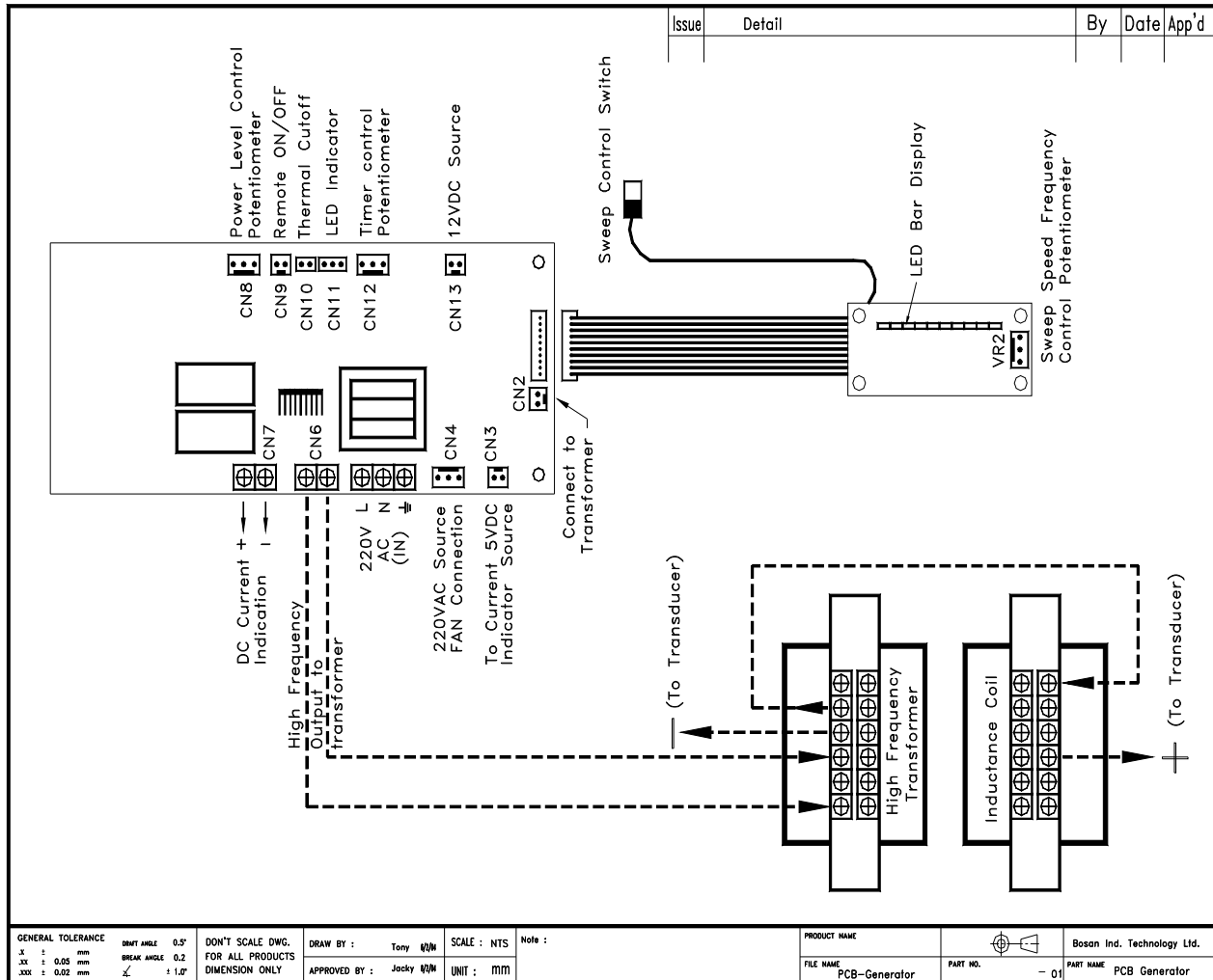
Output Power	100W, 200W, 300W, 400W, 500W, 600W
Input Power	220V ~ 230Vac $\pm 10\%$
Operating Frequency	10KHz ~ 133KHz
Sweep Frequency	1 ~ 20Hz
Bandwidth	1 ~ 5% of operating frequency
Overload Protection	Thermal overload Current overload Over Voltage
Output	(1) for current display. (2) for power level display.
Input adjustment	(1) Sweeping frequency setting by external potentiometer. (2) Sweeping frequency bandwidth setting by external potentiometer. (3) Timer setting by external potentiometer.
Feature	Sweeping function with bandwidth adjustment. Sweeping frequency adjustment. Compact design Continuously operation for heavy workload.
Operating Temperature	0 ~ 50°C
Operating Humidity	0 ~ 80%

## Feature

- 1) A cost effective method to provide an ultrasonic frequency to drive the transducers to perform ultrasonic cleaning application.
- 2) Directly connect with transducers from provided terminal block.
- 3) Low weight and simple construction.
- 4) Provide with external power adjustment, sweeping frequency adjustment and bandwidth adjustment.
- 5) Provide with external current indication and power level indication.
- 6) Equipped with thermo-overload protection.
- 7) Long life and high stable output.

A typical PCB type generator :





## Wiring Diagram

### Remark of Installation

- 1) This PCB type generator is the main part of high frequency generation power supply. Due to the compact size of the generator, the input source to the generator should be **well filtered and screened** in order to prevent any disturbance or abnormal noise generation.
- 2) It is advised to additionally install **a line filter** or a device to ensure noise from the mains source will not be feed to generator.
- 3) Customer should technical knowing the matching behaviour of generator and transducers.
- 4) Each generator had been tuned before ex-factory to designated frequency value and impedance value. In order to achieve the best matching effect, customers should be technical knowing the total impedance value and operating frequency of their transducers.

## **Safety Precaution**

- 1) Read all the operating instructions before use the products.
- 2) Do not try to dismantle the generator during operation.
- 3) This generator is intended for use with technical knowledge background.
- 4) It is not advised to use without external protection cover.
- 5) Any connection between power sources and transducers should be firmly fixed without loosen.
- 6) User should have the knowledge to tune or maintain the generator in good condition.
- 7) Ensure the power to generator should be dis-connected before connecting wires from generator.
- 8) To ensure the generator working at specified rated voltage.
- 9) Periodically cleaning up all the dust condenses on the top of PCB by using vacuum or jet air method.
- 10) Prevent the generator working in a high humidity and high corrosive environment.
- 11) To avoid damage the generator. Never place it on an unstable stand or subject to a vibration environment.
- 12) The generator should be ground ( if provided ) with ground line to prevent electrical shock.
- 13) To ensure the generator working with corresponding power rating of transducers. Any mismatching between generator's power and transducers' power will result under load or overload.

**Remark : The generator should be used together with power transformer and inductance coil**

## **Limited Warranty**

- 1) All generators and transducers provide one year limited warranty from date of purchase.
- 2) During the limited warranty period, we will repair or replace any defective parts resulting from normal operation condition. Any misuses and external reason to cause the failure of the parts will be charged as replace or repair.
- 3) All the replacement, maintenance or repairing service will be limited to specific area without additional charge on transportation cost. If the area outside the Guang Dong province , Hong Kong and Macau, an additional charge will be imposed.
- 4) All the generators and transducer units ( Only for complete set ) had been tuned and tested over 100 hours before shipment to ensure the function. Any alternation or modification on the unit after shipment will void the warranty agreement.

**Note : We reserve the right to change the specifications of products to improve or upgrade the performance without priority notification.**

**End**